



humble
catalogue



Instant atmosphere, anywhere.

A few years ago, we wondered why there wasn't a better alternative for candles when it came to creating atmosphere. What if there was a safer, more sustainable light source that could create the same cosiness and romance?

In response, we joined forces with design studio APE and set out to build a friendly, battery-powered lamp that could provide instant warmth and personality. In late 2019, we launched our first design that put the bulb front and centre: the humble® One.

Since its launch we've introduced new finishes, a smoky bulb and – more recently – our second design: the humble® Two. Our friendly spirit and durable battery are still there, but in a slimmer, full aluminium frame with a light source that's now covered by a stylish shade.

This catalogue gives you an overview of all the lamps currently in our collection. If we've piqued your interest, feel free to contact me directly via jorren@humblelights.com.

Jorren

Jorren Teertstra,
humble boss

one



Dark grey
HUMTLO0101



Off-white
HUMTLO0102



White marble
HUMTLO0103



Walnut
HUMTLO0104



Black marble
HUMTLO0105

Trade price £61.92 ex vat
RRP £129.00 inc vat

bulbs



ST64 swirl bulb
clear glass
HUMAC00003

Trade price £5.75 ex vat
RRP £12.00 inc vat



ST64 swirl bulb
smoked glass
HUMAC00012

Trade price £7.20 ex vat
RRP £15.00 inc vat

one aluminium



Gold
HUMTLO0106



Silver
HUMTLO0107

Trade price £66.72 ex vat
RRP £139.00

accessories



RF Remote
range radius ±10 m
HUMAC00006

Trade price £7.20 ex vat
RRP £15.00 inc vat



Wall base
HUMAC00014

two aluminium



Gold
HUMTLO0201



Silver
HUMTLO0202



Dark titanium
HUMTLO0203

Trade price £66.72 ex vat
RRP £139.00



1 Dock
wireless charger
HUMAC00001

Trade price £14.40 ex vat
RRP £30.00 inc vat



6 Dock
wireless charger
HUMAC00002

Trade price £1115.20 ex vat
RRP £240.00 inc vat



one

Design by Studio APE Amsterdam

The humble One is the first battery-powered lamp that puts the bulb front and centre. On average, a full charge produces more than 120 hours of light. Charge the lamp via cable, wirelessly on any Qi-standard charger, or on our matching humble charging dock.

Under the hood of the humble One is a clever, modular, battery-powered system, in which all components are easily serviceable and replaceable. This gives the One an even longer potential lifespan – and makes upgrades an option as well.

The humble One was created by Amsterdam-based design studio APE. This award-winning studio is known for their simple, no-nonsense aesthetic combined with technical and sustainable innovations.





What others are saying

“This is one of my favourite products of all time. I use mine all the time. I carry it around like one would have carried a candle at night in the olden days. It’s just so handy! It goes on the table outside at night, inside on the dining table, helps light near my sink in the kitchen as it’s a bit dark to see what your washing up at night, we used it camping, sits on the sideboard sometimes..”

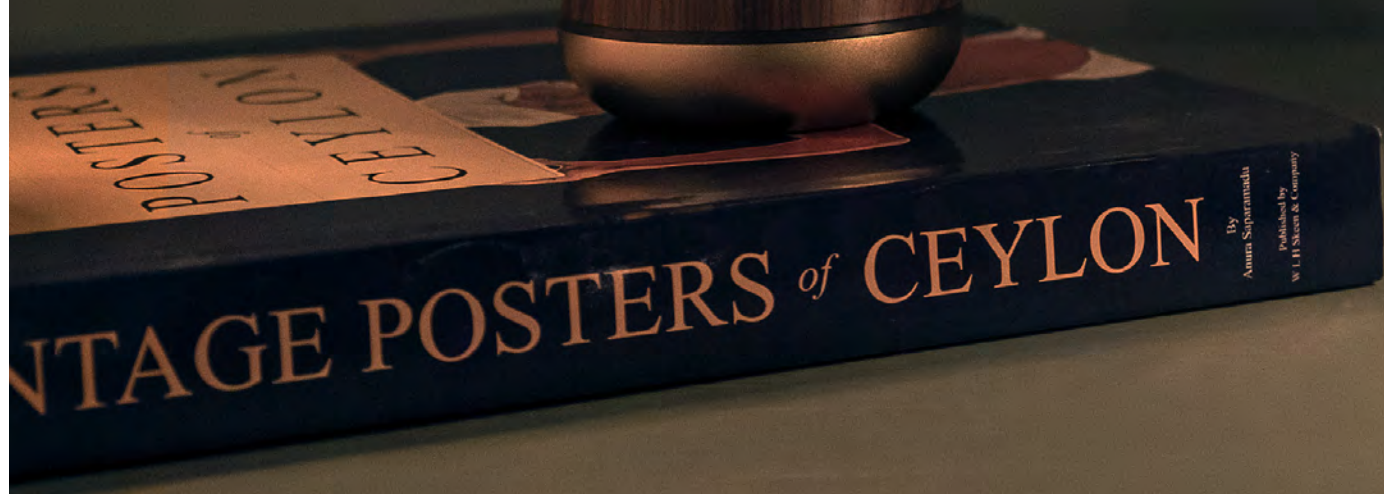
Thank you designers at @humble.lights for creating it and making me happy.”

- Francesca from Bear & Bear Store, London

Did you know

A humble light has three brightness settings: (1) candle, (2) ambient or (3) work.

On 'work' a single charge produces at least 45 hours of light. On 'candle' that can go as high as 120 hours. Even in a professional situation, that's more than a week without charging (!)





two

Design by Studio APE Amsterdam

The humble Two is the One's younger sister. It has many similarities to its older sibling, but it leaves the bulbs behind and focuses on the signature domed shade. Its full aluminium body is available in three classy, metallic finishes: gold, silver and dark titanium.

Technically, both lamps share the same battery-powered core, making them equally user-friendly. This also means that for ultimate compatibility, the One and the Two can respond simultaneously to a single button press on the humble remote. To create its slim silhouette, however, the Two's batteries were reconfigured to fit inside its central column.

The humble Two was created by Amsterdam-based design studio APE. This award-winning studio is known for their simple, no-nonsense aesthetic combined with technical and sustainable innovations.



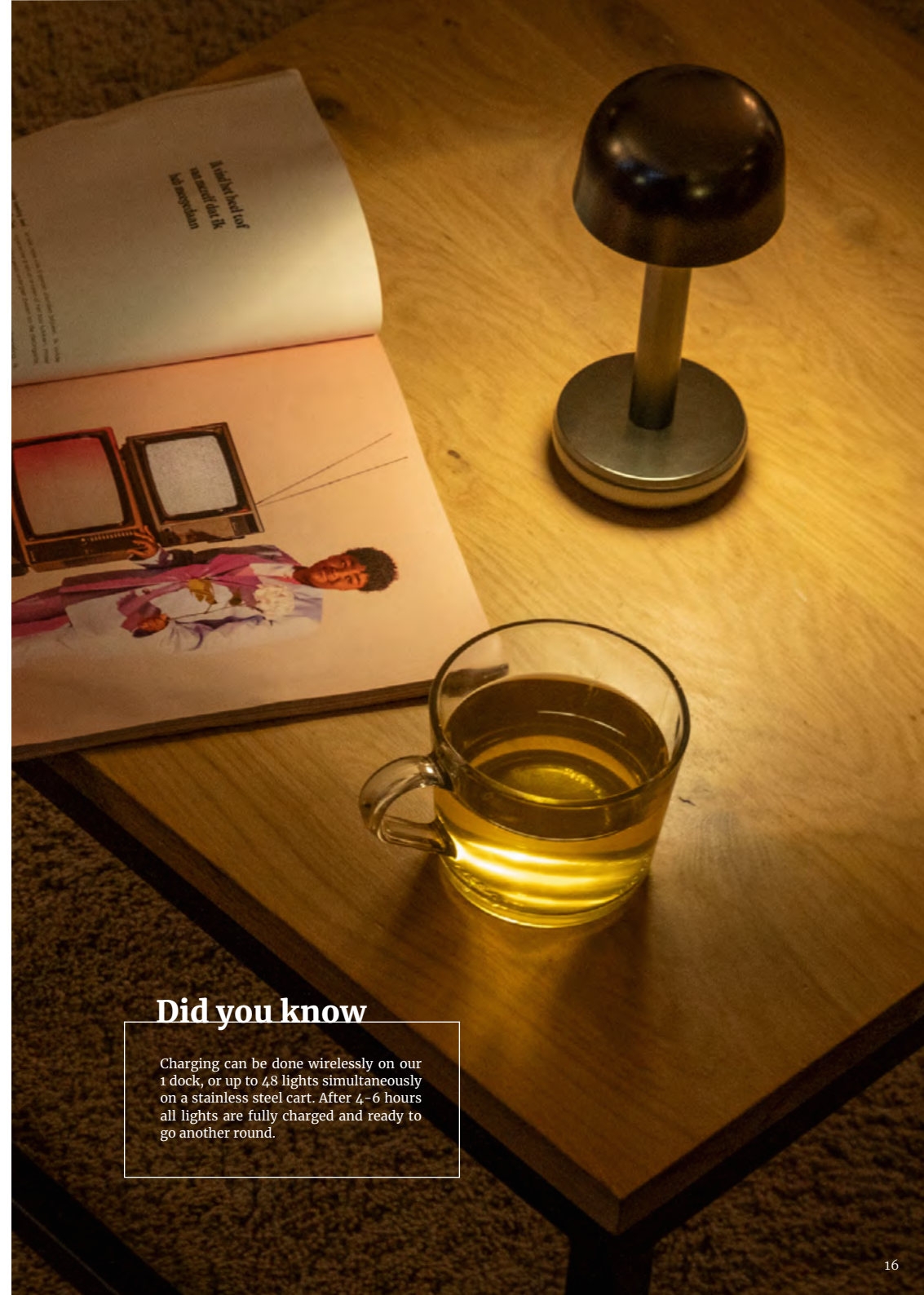


Did you know

We offer a not-so-humble remote that can control all lights simultaneously within a 10 meter radius.

Really handy if you have a big space where you want to control the mood instantly. It even let's you display the battery level on all your units for 10 seconds.





Did you know

Charging can be done wirelessly on our 1 dock, or up to 48 lights simultaneously on a stainless steel cart. After 4-6 hours all lights are fully charged and ready to go another round.

one

General product information



Materials

| | |
|-------|------------------|
| Base | aluminium |
| Cover | PBT or aluminium |
| Bulb | glass |
| Seals | silicon |

Environment

Indoor, occasional outdoor use possible
(don't leave outside, but can withstand a rain shower)
IP22

Dimensions

Ø: 8,5 cm / 3.3 in, H: 19,5 cm / 7.7 in

Packaging dimensions

H: 25 cm / 9.9 in, W: 11 cm / 4.4 in, D: 11 cm / 4.4 in

Weight

Product (One): 0,31 kg / 0.69 lbs
Incl. packaging (One): 0,50 kg / 1.10 lbs

Product (One alu): 0,29 kg / 0.64 lbs
Incl. packaging (One alu): 0,47 kg / 1.04 lbs

Colli quantity

12 pc / sales colli qty: 1 pc

Technical specifications

| | |
|-------------------|---------------------------------|
| Light source: | E27 low-voltage bulb |
| Power: | 1W, 5V |
| Kelvin: | 2200k |
| Dimmable: | 3 levels |
| | Candle 8 lumen |
| | Ambient 16 lumen |
| | Work 43 lumen |
| Battery capacity: | 4,000 mAh / 3.7V |
| Charging cable: | USB-C to USB-A |
| Control: | Toggle switch on bottom of base |

Battery life

Candle: > 120 hours
Ambient: > 80 hours
Work: > 45 hours

Charging

Charging wirelessly or via cable (USB-C to USB-A).
Charging time to full power with USB cable: up to 4 hours,
depending on what adaptor is used. Charging time to full
power wirelessly: up to 6 hours with 10 W wireless charger.
Any Qi certified wireless charger is suitable to charge a
humble® One light.

two

General product information



Materials

| | |
|-------|-----------|
| Base | aluminium |
| Shade | aluminium |
| Seals | silicon |

Environment

Indoor, occasional outdoor use possible
(don't leave outside, but can withstand a rain shower)
IP22

Dimensions

Ø: 8,8 cm / 3.5 in, H: 21,2 cm / 8.3 in

Packaging dimensions

H: 25 cm / 9.9 in, W: 11 cm / 4.4 in, D: 11 cm / 4.4 in

Weight

Product: 0,26 kg / 0.57 lbs
Incl. packaging: 0,4 kg / 0.88 lbs

Colli quantity

12 pc / sales colli qty: 1 pc

Technical specifications

| | |
|---------------|-----------------------------|
| Light source: | 30 mm flexible LED filament |
| Power: | > 1W, 3V |
| Kelvin: | 2700k |
| Dimmable: | 3 levels |
| | Candle 8 lumen |
| | Ambient 16 lumen |
| | Work 43 lumen |

Battery capacity: 2400 mAh / 3.7V
Charging cable: USB-C to USB-A
Control: Toggle switch on bottom of base

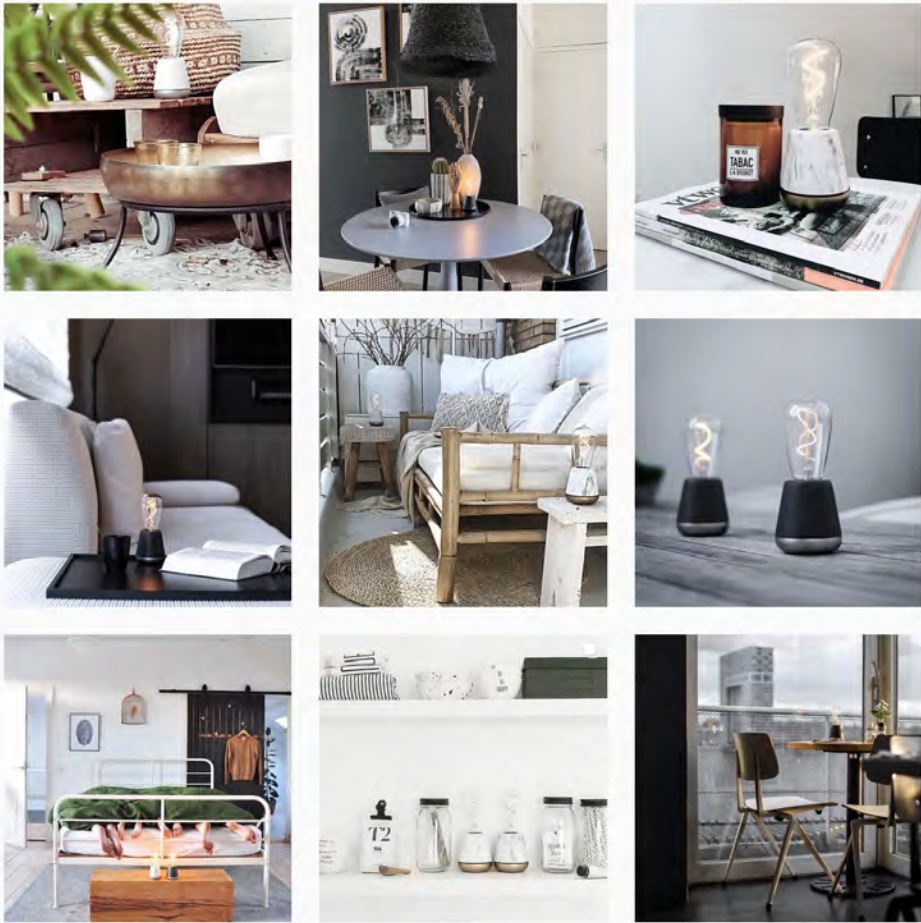
Battery life

Candle: > 95 hours
Ambient: > 30 hours
Work: > 17 hours

Charging

Charging wirelessly or via cable (USB-C to USB-A).
Charging time to full power with USB cable: up to 3 hours,
depending on what adaptor is used. Charging time to full
power wirelessly: up to 4 hours with 10 W wireless charger.
Any Qi certified wireless charger is suitable to charge a
humble® Two light.

@humble.lights



humble

Get in touch

If you have any questions or if you want to work with us,
do not hesitate to contact us:

Pad Home

Studio 23 Riverside Building
55 Trinity Buoy Wharf
London
E14 0FP
Tel: 0207 9877341
Email: sales@padhome.co.uk